

# delivering content into Japan with remote peering



Japanese content is no longer a niche export. Anime, gaming, live entertainment, sports, and pop culture communities are global, and audiences expect the same experience everywhere, regardless of where your platform is headquartered.

USD **16.2B**

Japan's OTT streaming market size in 2025  
(15.9 % CAGR projected)

*(imarc)*

USD **14.7B**


projected global anime streaming market by 2030, fuelled by simulcasts and global platforms

*(ResearchAndMarkets)*

USD **16.6B**

Japan's gaming market in 2025, one of the largest entertainment markets worldwide

*(newzoo)*



For content providers, the hard part is not acquiring the catalogue, it is delivering it at scale with predictable performance and sustainable cost. As demand in Japan grows, transit-heavy strategies often start to strain. Latency variability, peak-hour congestion, and rising unit costs can quickly become business problems, not just network problems.

This is where a focused interconnection strategy into Japan becomes a competitive advantage. By peering with networks that serve Japanese end-users, providers can improve delivery paths, reduce reliance on paid transit for Japan-bound traffic, and stabilise quality of experience – all without immediately deploying infrastructure locally.



# the hidden cost of delivering Japanese content across long-haul transit

Many international content providers begin with a familiar pattern: an origin or regional cache located in one geography, then upstream transit to reach eyeballs in another. It works, until you hit scale.

# challenges with transit-based delivery to Japan



## Variability of multiple networks

When traffic traverses multiple transit networks, performance becomes less predictable. Jitter and peak-hour congestion can lead to slower start times, bitrate fluctuations, and intermittent buffering.



## Rising transit costs

Every incremental gigabyte to Japan rides paid transit, causing costs to scale linearly with growth. Spikes during premieres, seasonal content, or live events can make transit-heavy delivery expensive.



## Troubleshooting complexity

As traffic paths cross multiple transit networks, pinpointing bottlenecks becomes more difficult. Resolution can be slow and may require switching providers or adding costly redundancy.

### Strategic takeaway

Transit is essential, but relying on it exclusively is rarely optimal for high-demand markets. Combining transit with targeted peering can improve performance, reduce costs, and give you greater control over delivery quality.

# why peering improves delivery economics

Peering allows networks to exchange traffic more directly rather than sending everything through upstream transit providers. This directness is particularly valuable for content providers delivering into Japan, where high-volume traffic – including video streaming, software updates, game patching, and live media – demands predictable performance and cost efficiency.



## Path control

- Keep traffic on shorter, more predictable routes
- Fewer intermediate hops and reduced points of congestion
- Ensures consistent user experience even during peak hours



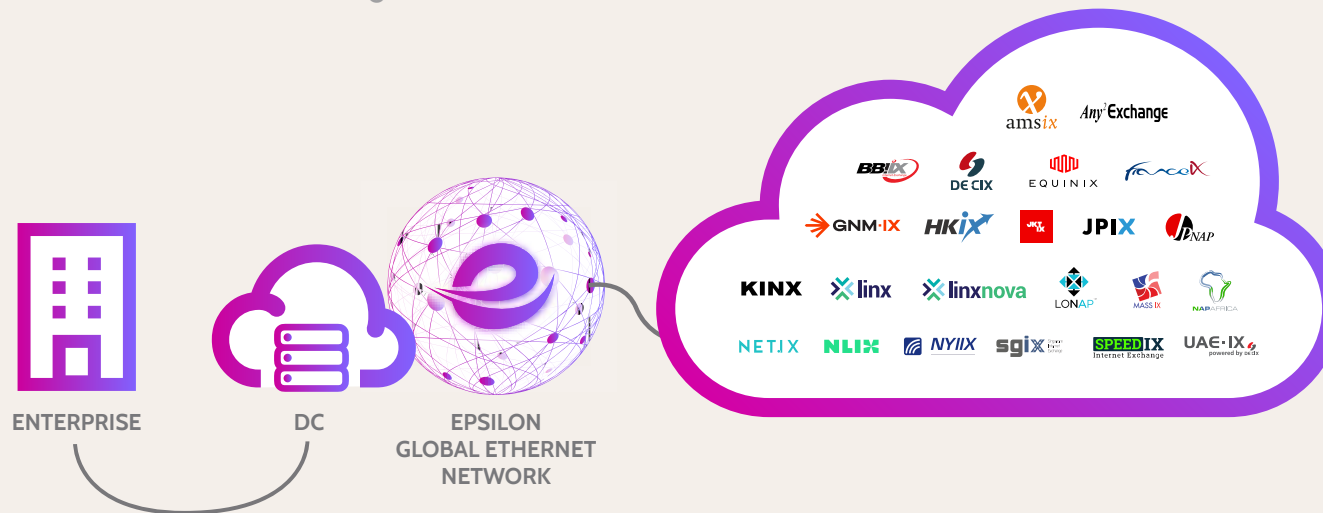
## Cost efficiency

- Reduce the volume of Japan-bound traffic on paid transit
- Lower overall cost per delivered bit
- Benefit depends on traffic profile, peer mix, and agreement structure



# why remote peering in Japan matters for content providers

Remote peering lets content providers tap into Japan's dense interconnection ecosystem without building local infrastructure from day one. The key advantage? Ecosystem density drives real results. It's not just about port speed or switching fabric – it's about who is connected and how much meaningful traffic flows.



A well-connected IX environment in Japan:

- Brings together major ISPs, OTTs, and other key internet ecosystem players
- Increases the likelihood of peering sessions that truly improve delivery performance
- Provides flexibility to interconnect based on footprint, resilience, and latency targets

# peering with Japanese ISPs and OTTs

When evaluating a delivery strategy, identifying the networks that will most effectively reach your audience is critical.

## What to consider when selecting peers:



### User distribution

Where your audience is, and which networks they use



### Performance goal

Latency, stability, and peak-hour consistency



### Content type

Video, gaming, and live content have different traffic patterns



### Cost efficiency

Reducing reliance on long-haul transit



# featured IX partners in Japan

Prioritising the right networks lets content providers reduce transit dependency, improve path consistency, and deliver more predictable outcomes. Remote peering provides direct access to Japan's leading IX environments, connecting to dense ecosystems of ISPs, OTTs, and digital platforms.

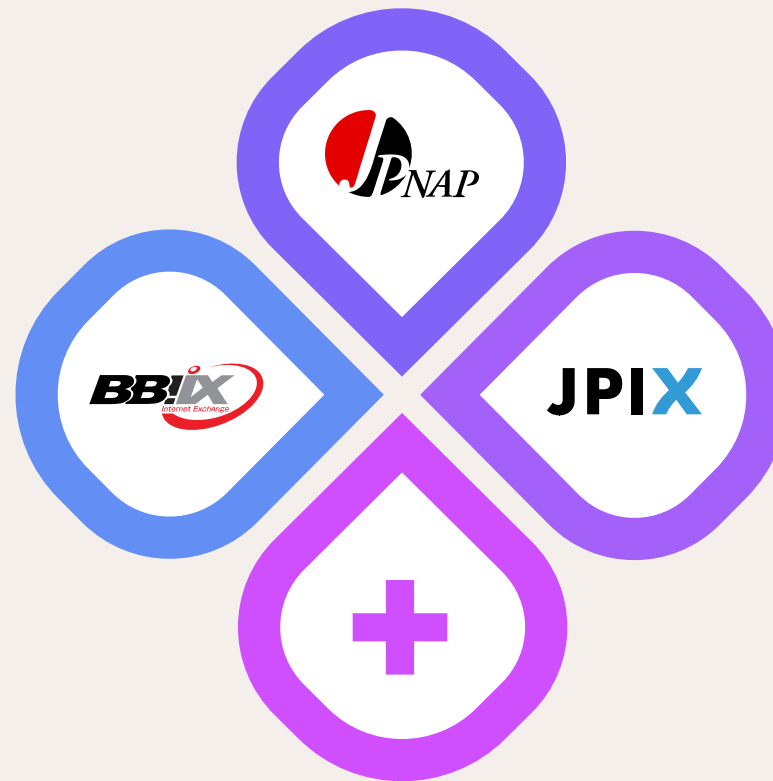
## JPNAP

One of Japan's largest IXs, connecting major ISPs and OTT platforms

## BBIX

High-performance interconnection in key Japanese data centres

[Explore IX locations](#)



## JPIX

Broad interconnection across Tokyo and Osaka data centres

## REGIONAL IXs

Targeted access to mobile networks and regional ISPs



おみやげ  
souvenir

DESSERT  
デザート

WELCOME ようこそ ようこそ WELCOME よこそ

寿司屋  
SUSHI SUSHI SUSHI

9 22

海鮮  
SEAFOOD  
日本1番  
JAPAN NO.1

照り焼き  
Teri-yaki

唐揚げ  
500円

大阪  
OSAKA  
TOWER

I ♥ OSAKA  
大阪

免税店  
DUTY FREE SHOP

免税店  
DUTY FREE SHOP

居酒屋  
IZAKAYA  
CASUAL DINING

酒  
SAKE

1 FL 20-2-8 COUNTY  
2 FL 88 TATAHI ROAD

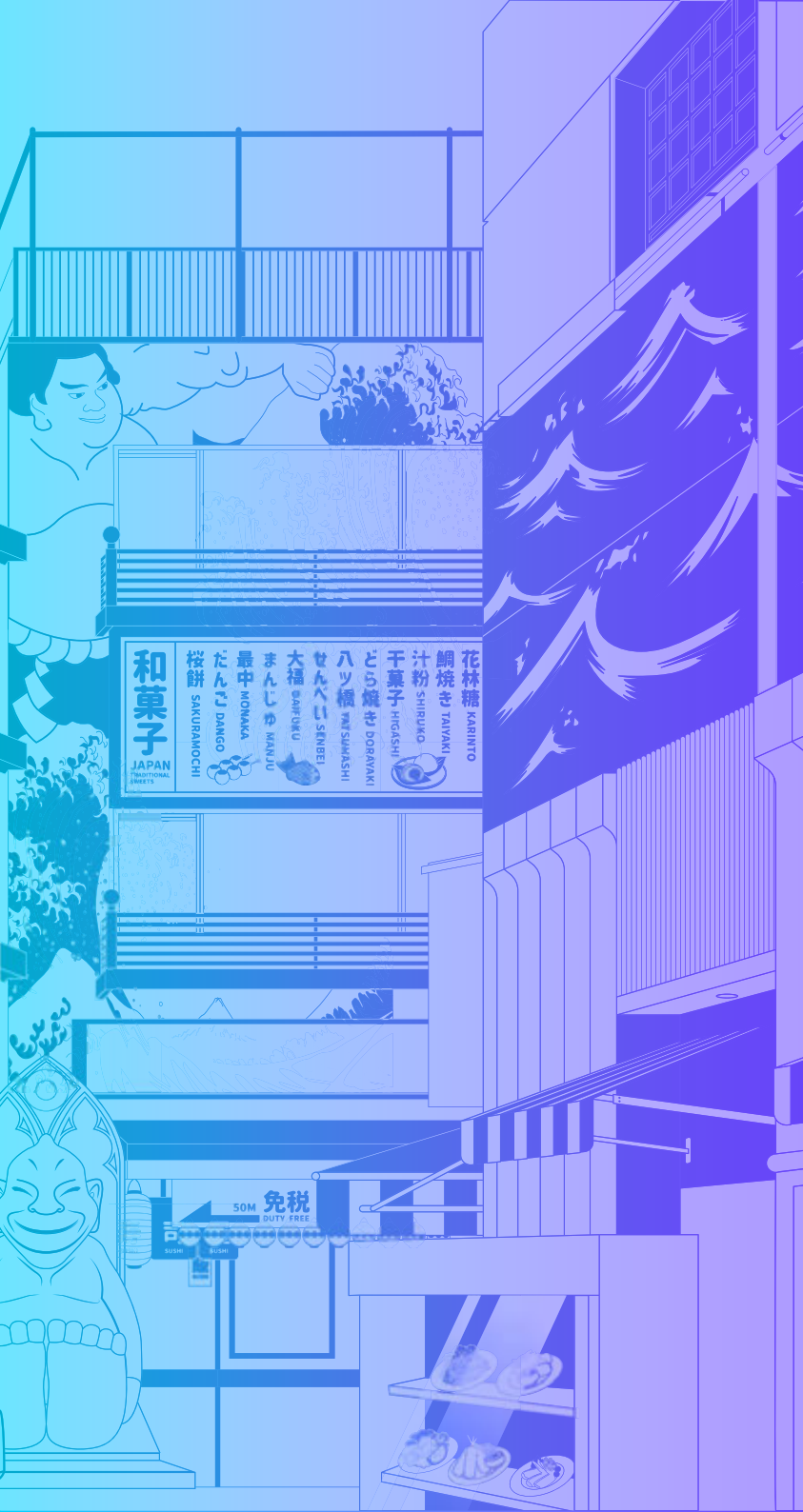
# connecting to Japan without physical infrastructure

Historically, peering in Japan required building infrastructure – from data centre presence to cross-connects, router deployment, and ongoing operational overhead. For many providers, that level of investment is a barrier, especially when demand is still growing.

Traditional approach: Local deployment	Remote peering approach
Data centre presence required	No local infrastructure required
Cross-connects and hardware setup	Access Japan IXs via existing network
Higher capex and operational overhead	Lower cost and operational complexity
Slower time-to-market	Faster, scalable deployment

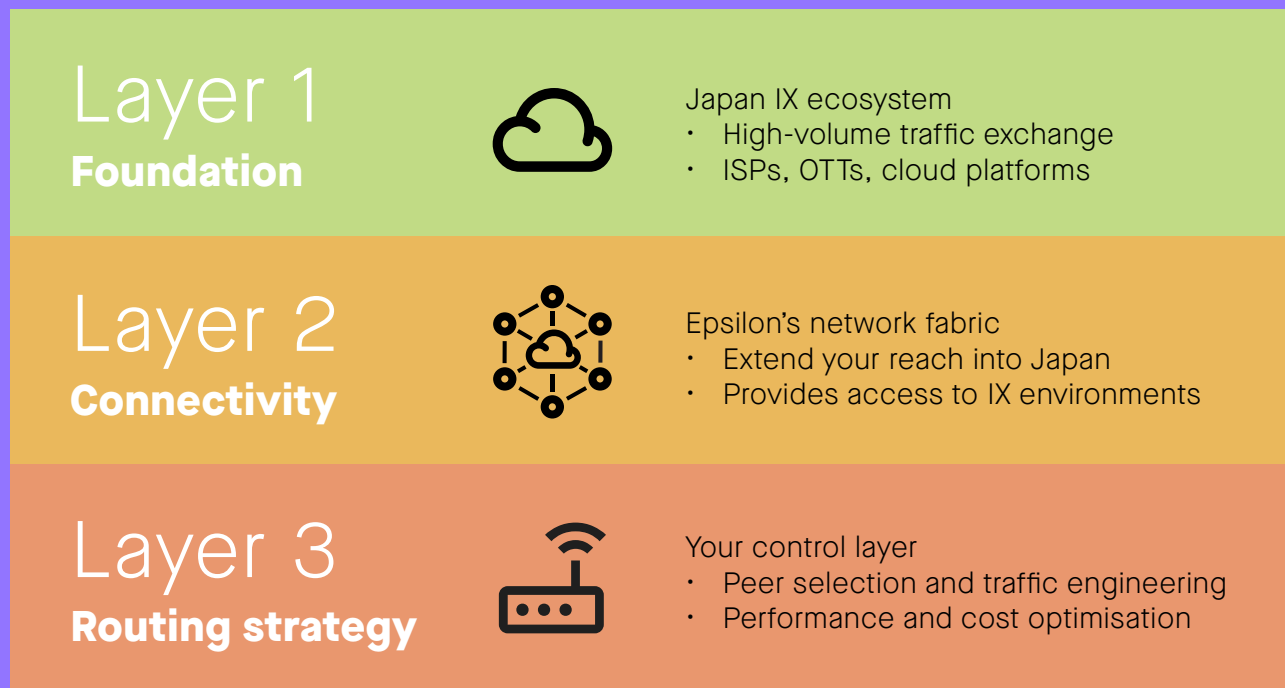
When this model makes sense:

- Entering Japan for the first time with faster go-to-market
- Scaling content distribution with a flexible on-ramp
- Reducing reliance on transit without building locally
- Optimising delivery across multiple global markets



# how Epsilon enables remote peering into Japan

Epsilon connects your network to Japan's interconnection ecosystem, enabling remote peering without the need for local infrastructure.



peer remotely at  
**20+**  
internet exchanges

**150+**  
global exchange  
on-ramp locations

**15K+**  
peering members

scalable bandwidth  
options up to  
**100G**

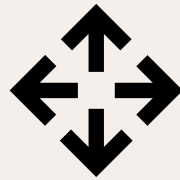
# designing a peering strategy that works



## Measure first

Baseline your current Japan delivery experience and track key metrics:

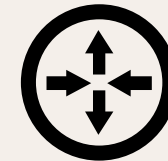
- Video start time and rebuffering
- Packet loss and jitter
- Peak-hour performance
- Transit utilisation
- Cost per delivered bit



## Implement with intent

Move a defined portion of traffic to a subset of peers, validate impact, and tune progressively.

- Start small, expand gradually
- Adjust traffic engineering policies
- Fall back to transit path if needed



## Treat as a living system

Peering evolves as traffic patterns and networks change.

- Continuous optimisation
- Adapt to new partners and routes



# planning for growth with high-capacity connectivity

Japanese content demand can spike due to releases, seasonal viewing, and live events. Capacity planning should be built into your peering design to handle growth seamlessly.

## **Align initial port speed**

Match port speed to realistic demand

## **Forecast peaks, not averages**

Prepare for high-demand events

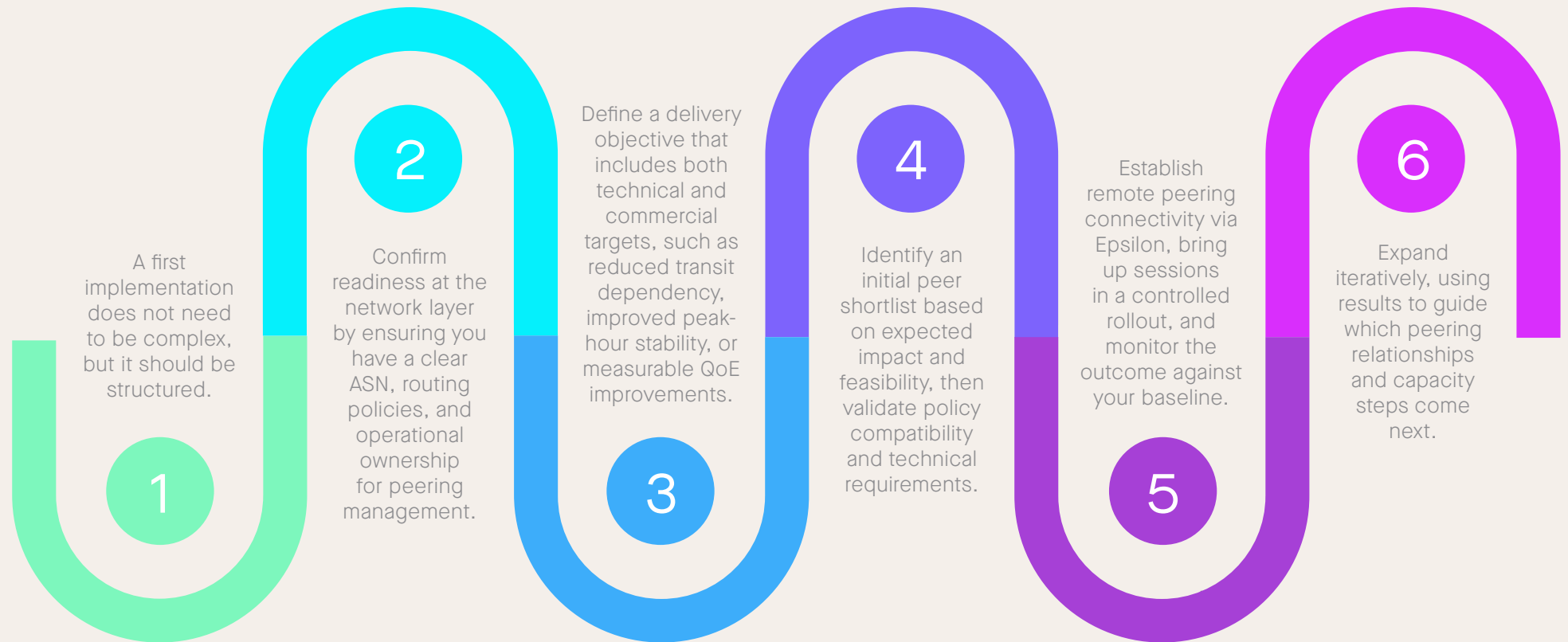
## **Maintain performance headroom**

Avoid degradation during peak times

## **Plan scalable upgrades**

Make scaling a strategic, not emergency, decision

# getting started: a simple checklist



# deliver Japanese content more efficiently with remote peering

As Japanese content continues to reach global audiences, the networks delivering that content need to scale alongside demand.

Building a stronger interconnection position into Japan through remote peering can help content providers improve path quality, stabilise performance, and reduce reliance on transit-heavy delivery models. With remote peering, these improvements can be achieved without waiting for a full infrastructure build-out in Japan.

Scale better, perform predictably, and take control of your audience experience with remote peering.



# interconnecting your world: **20 years of remote peering experience**

Epsilon Telecommunications is a leading global software-defined network provider that offers a comprehensive suite of end-to-end connectivity and communication solutions, including remote peering, to the world's largest carriers and organisations.

With Infiny, our award-winning Network-as-a-Service (NaaS) platform, we enable seamless, on-demand peering at leading Internet Exchange Points. Backed by a high-performance and extensive global network spanning Europe, the Middle East, the United States, and Asia, we give you the agility and reach to truly interconnect your digital world.

ready to take your remote peering strategy further?

[Talk to an expert →](#)

## **GLOBAL HQ**

New Tech Park,  
151 Lorong Chuan  
#06-01A  
Singapore 556741

## **LONDON**

Telephone House  
2<sup>nd</sup> Floor, 69-77 Paul Street  
EC2A 4NW,  
United Kingdom

## **SOFIA**

Business Center Rubix  
8 Dimitar Mollov Str.  
1750 Sofia, Bulgaria